

Kumar
palmgrove

KONDHWA | 2 BHK HOMES





Image for promotional purpose only



Kumar Properties

The tallest of reputations are built on the deepest of foundations

Have you ever asked yourself what truly separates a house from a home? True, they are both built of the same materials and they may have the same facilities but there is one thing in a home that a house will never have; a soul. In a home you will find warmth, love and solidarity. At Kumar Properties, we do not build houses; we build homes. For over half a century, Kumar Properties has carved a niche for itself in the cluttered marketplace with an unwavering adherence to two simple values – quality and trust. Our wholesome homes have given our patrons many-a-reason to believe in us and spread the word. So when you move into a Kumar Properties project, you're not just moving into a new house, you're walking into a home that will love you back with all its heart. It will keep you safe and warm so that you can nurture your dream.

HABITATS

Builders build houses; We build Habitats.

'R' Habitats talks about one big family that shares, cares and celebrates together. It is about who we are and what we love to do. It is a perfect harmony of the essential, social and recreational aspects of life, 'R' Habitats is an experience like no other because it isn't just about a space to live in, it's about the people you're living with! A philosophy that is meant to evolve as years go by so that you always feel being taken care of. Life at 'R' Habitats is always exciting and debuts an electrifying mix of events, initiatives and benefits. 'R' Habitats is a collaborative affair and with your participation we can surely make it even better.

AWARDS & RECOGNITIONS

Good work is noticed. Great work is rewarded.

Over the five decades of our existence, we have won many laurels and awards for our adherence to quality, passion and commitment. Yes, it feels great. But our true reward is the trust that over 30,000 customers have placed in us and the projects we have delivered to make them happy. These awards only motivate us to work harder because we know that it is rather easy to get to the top; but what takes a true commitment and an unrelenting adherence to passion is, staying there!

Artist Rendered



PROJECT OVERVIEW

MODERN & ERGONOMIC 2 BHK HOMES

Kumar Palmgrove welcomes you to a joyous home and life. Situated in Kondhwa, it enjoys close proximity to a host of nearby retail and recreational hubs, schools and parks. Well-connected to the interior of the city such as Camp, Katraj, Bibvewadi & Satara Road, your new home here will be a hub of convenience with the advantage of green environs. A unique project that offers a serene ambiance with the conveniences of city life. Built with quintessential wellness amenities for all age groups ensure your holistic wellbeing, in a range of blissful **2BHK** apartments. Kumar Palmgrove spells a complete experience waiting to be explored and lived.

All images for promotional purpose only



RECREATIONAL AREAS



Swimming Pool with deck



Steam Room



Changing room



Children's Play Area



Multi Purpose Hall with Party Lawn



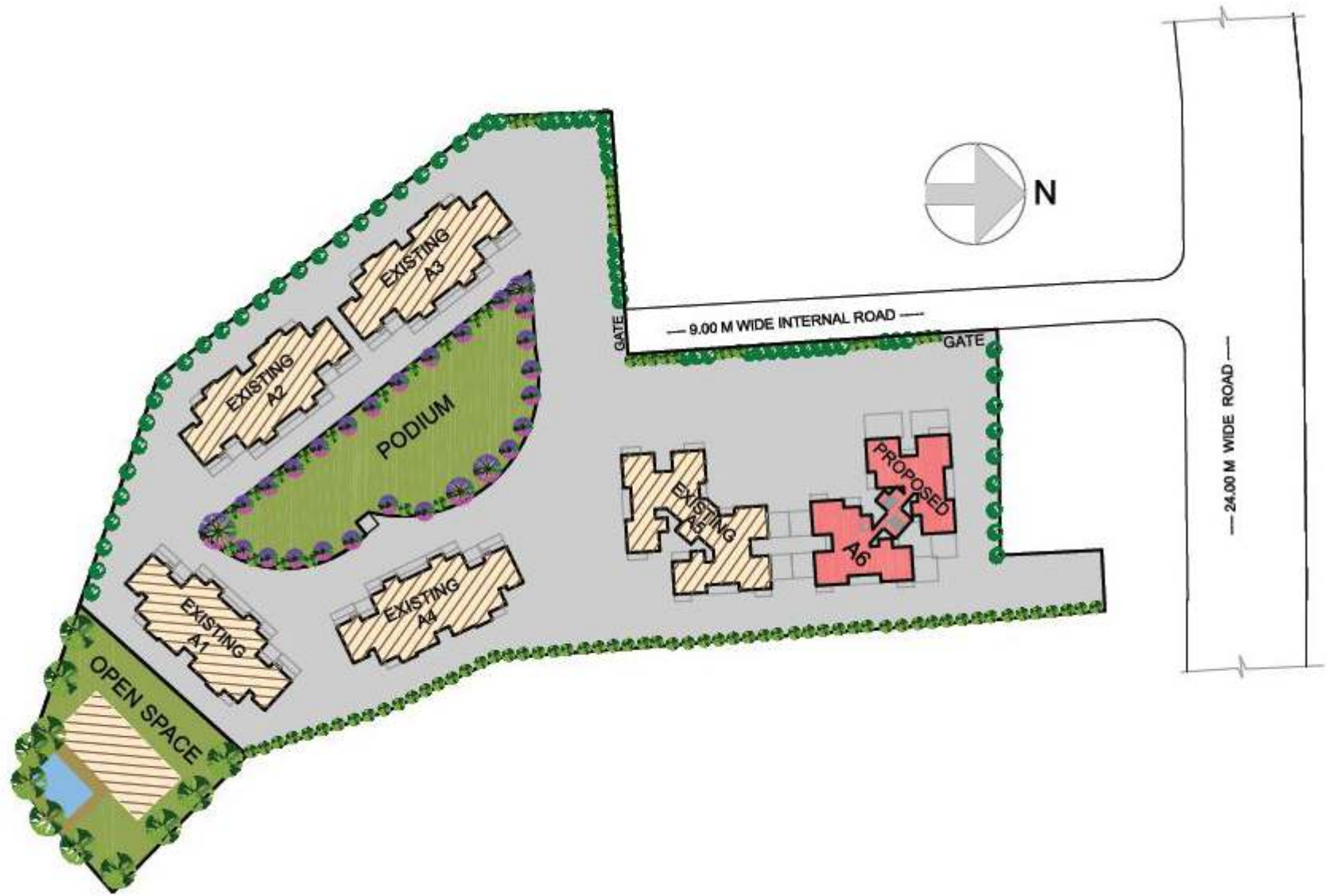
Gymnasium



Games Room



PROJECT PLAN



Kumar
palmgrove



Tower A6 : P52100016606
maharera.mahaonline.gov.in

COMMON AREA FACILITIES

- Over 250 Happy families already residing at Kumar Palmgrove
- The project offers ready recreation area
- A beautiful elevation with designer entrance lobby
- The project has convenient access , all the internal roads and external roads are well lit. All buildings are surrounded with varied flowering plants & trees.
- Project lies within PMC limits and has overhead & underground water tanks for plenty of water storage
- An elevated podium for every day walks or hang out sessions is unique to the project
- Security cabin at main entrance gate, CCTVs across entire project and intercom facility
- Two automatic passenger elevators with complete DG Power Back up in every building
- Complete DG backup for common areas
- Fire-fighting systems



All images for promotional purpose only



FLAT SPECIFICATIONS

DOORS & WINDOWS

Powder coated aluminium sliding windows in all rooms | Mosquito net and MS grills to windows | Main door with designer skin, brass fitting or equivalent | All internal laminated/ prefinished doors for other rooms

ELECTRICALS

Concealed electrical copper wiring with circuit breakers | Earth leakage circuit breakers in main electrical panel | Adequate electrical points in each room | Premium quality switches in all rooms | Provision for inverter | Provision for TV & AC in all bedrooms | Provision for Intercom Facility

WALLS & CEILING

Superior internal OBD wall finish | Gypsum / POP walls and ceiling

BATHROOMS

A combination of tiles for bathrooms till lintel level | White sanitary ware | Hot / cold concealed single lever shower mixer | Concealed plumbing with premium quality pipes | Solar pre-heated water for master toilet

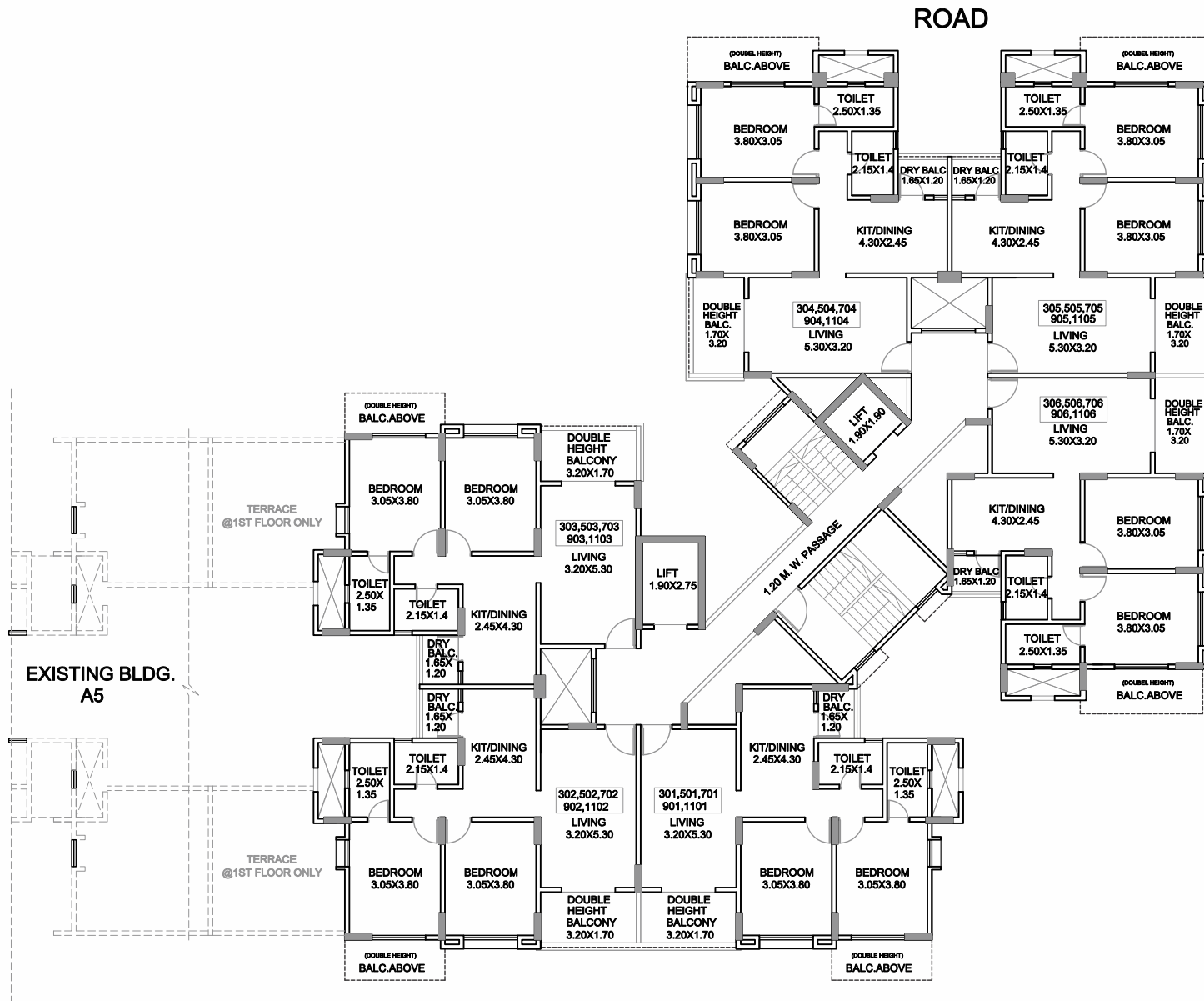
FLOORING

Vitrified tile flooring in all rooms

KITCHEN

Kitchen platform with granite top with stainless steel sink with tap | Kitchen Dado wall tiles of 1'6" width from the granite top | Plumbing point provisions for water purifier and washing machine | Provision for exhaust fan & refrigerator

ODD FLOOR PLAN



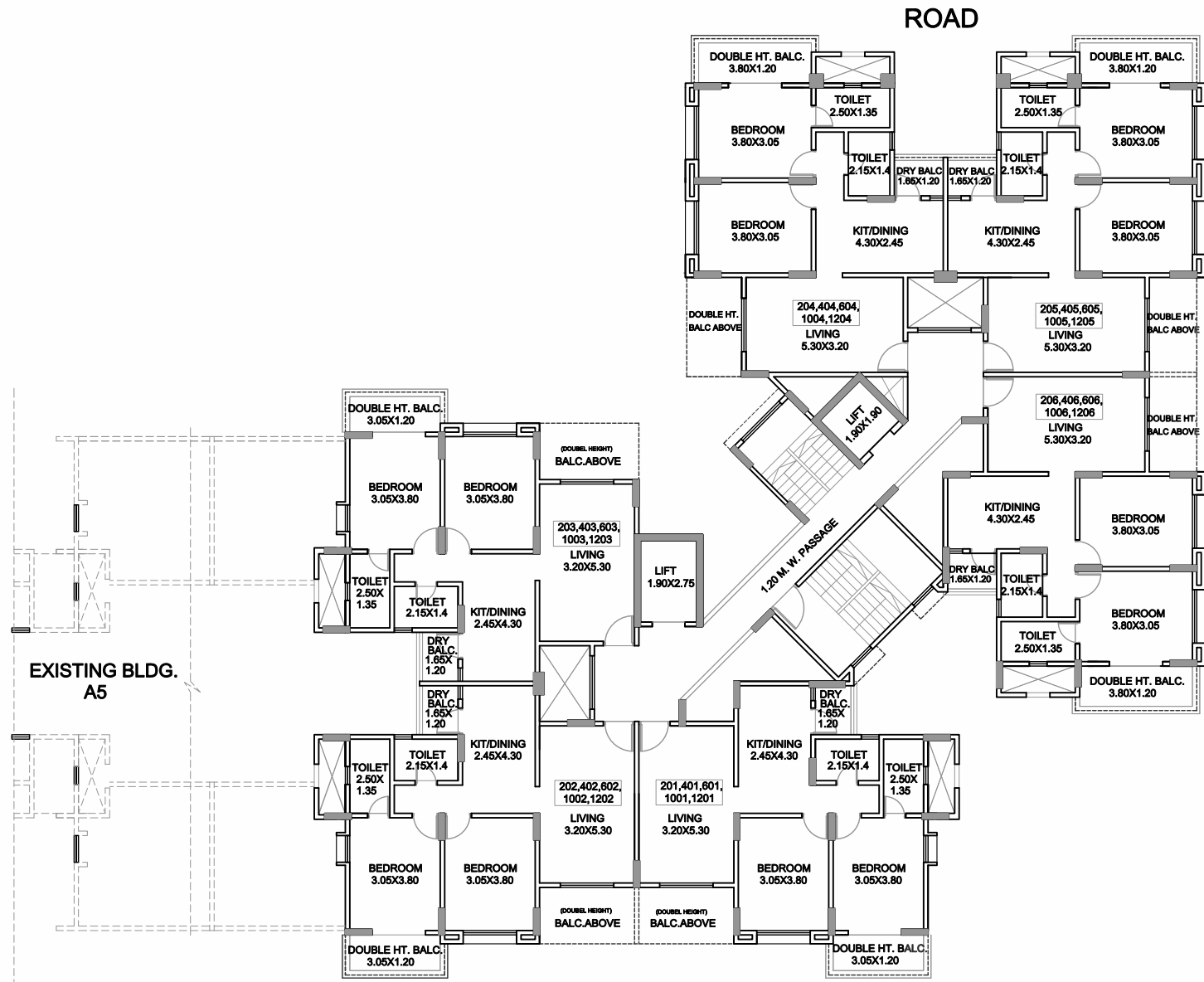
Note - All Dimensions in Meters

KUMAR PALMGROVE
WING A6
TYPICAL FLOOR PLAN
(3rd, 5th, 7th, 9th, 11th)

FLAT NO.	FLAT TYPE	FLAT AREA	CARPET AREA IN SQ.M.	
			(DOUBLE HEIGHT) BALCONY	DRY BALCONY
301, 302, 303, 304, 305, 306 501, 502, 503, 504, 505, 506 701, 702, 703, 704, 705, 706 901, 902, 903, 904, 905, 906 1101, 1102, 1103, 1104, 1105, 1106	2 BHK	62.45	5.28	1.91



EVEN FLOOR PLAN



Note - All Dimensions in Meters

KUMAR PALMGROVE
WING A6
TYPICAL FLOOR PLAN
(2ND, 4TH, 6TH, 10TH, 12TH)

FLAT NO.	FLAT TYPE	FLAT AREA	CARPET AREA IN SQ.M.	
			(DOUBLE HEIGHT) BALCONY	DRY BALCONY
201, 202, 203, 401, 402, 403, 601, 602, 603 1001, 1002, 1003, 1201, 1202, 1203	2 BHK	62.45	3.52	1.91
204, 205, 206, 404, 405, 406, 604, 605, 606 1004, 1005, 1006, 1204, 1205, 1206	2 BHK	62.45	5.00	1.91



KEY LOCATIONS

Distances from Nearby Areas

Cinema

Inox	4.2 km
City Pride	6.3 km
PVR	6.8 km

Travel

Pune Station	8.9 km
Pune Airport	16.3 km

Clubs

Corinthians Resort and Club	4.7 km
Turf Club	6.8 km
The Poona Club	8.1 km

Hotels

Hotel Aurora Tower	7.9 km
Hotel Shantai	8.3 km
Hotel The Central Park	9.3 km

Areas

NIBM	2.6 km
Undri	4.2 km
Marketyard	5 km
Camp	6.6 km

Shopping

More Shopping Mall	900 m
Dorabjee's Royale Heritage Mall	4.5 km
Kumar Pacific Mall	6.8 km

Hospitals

Wankhede hospital	1.4 km
Satyanand Hospital	1.4 km
National Hospital	1.7 km
Sana Hospital	1.8 km

Groceries

More Supermarket	950 m
Dmart	1.4 km
Dorabjee's	3.1 km

Education

Mansukhbhai Kothari National School	1 km
Tree House Highschool	1.4 km
Sinhagad City School	2.9 km
Rims International School and Junior College	3.1 km

Food

Agra Restaurant	1.4 km
Madinah Restaurant	1.7 km
Jyoti Pure Veg	2.1 km

*Approximate distances as found on Google maps.

LOCATION MAP



Kumar
palmgrove



Tower A6 : P52100016606
maharera.mahaonline.gov.in

**DEVELOPER -
KUMAR COMPANY**

SITE ADDRESS : S. No. 17, Kondhwa, Pune 411048

Call +91 95 95 61 00 00 | sales@kumarproperties.com | www.kumarproperties.com

CORPORATE ADDRESS : 3rd floor, Kumar Properties, East Street, Camp, Pune 411 001

Disclaimer : All images shown are for promotional purpose only. Terms & conditions apply.

