

Kumar
pebble park

2 BHK HOMES | KHUSHI - 2 (D2)
HADAPSAR





A gold square containing the text "50 YEARS YOUNG" in black. The number "50" is large and bold, with five small stars below it. The words "YEARS" and "YOUNG" are stacked below the stars in a smaller, bold font.

Kumar Properties

The tallest of reputations are built on the deepest of foundations

Have you ever asked yourself what truly separates a house from a home? True, they are both built of the same materials and they may have the same facilities but there is one thing in a home that a house will never have; a soul. In a home you will find warmth, love and solidarity. At Kumar Properties, we do not build houses; we build homes. For over half a century, Kumar Properties has carved a niche for itself in the cluttered marketplace with an unwavering adherence to two simple values – quality and trust. Our wholesome homes have given our patrons many-a-reason to believe in us and spread the word. So when you move into a Kumar Properties project, you're not just moving into a new house, you're walking into a home that will love you back with all its heart. It will keep you safe and warm so that you can nurture your dream.

HABITATS

Builders build houses; We build Habitats.

'R' Habitats talks about one big family that shares, cares and celebrates together. It is about who we are and what we love to do. It is a perfect harmony of the essential, social and recreational aspects of life, 'R' Habitats is an experience like no other because it isn't just about a space to live in, it's about the people you're living with! A philosophy that is meant to evolve as years go by so that you always feel being taken care of. Life at 'R' Habitats is always exciting and debuts an electrifying mix of events, initiatives and benefits. 'R' Habitats is a collaborative affair and with your participation we can surely make it even better.

AWARDS & RECOGNITIONS

Good work is noticed. Great work is rewarded.

Over the five decades of our existence, we have won many laurels and awards for our adherence to quality, passion and commitment. Yes, it feels great. But our true reward is the trust that over 30,000 customers have placed in us and the projects we have delivered to make them happy. These awards only motivate us to work harder because we know that it is rather easy to get to the top; but what takes a true commitment and an unrelenting adherence to passion is, staying there!



PROJECT OVERVIEW



MODERN & ERGONOMIC 2 BHK HOMES

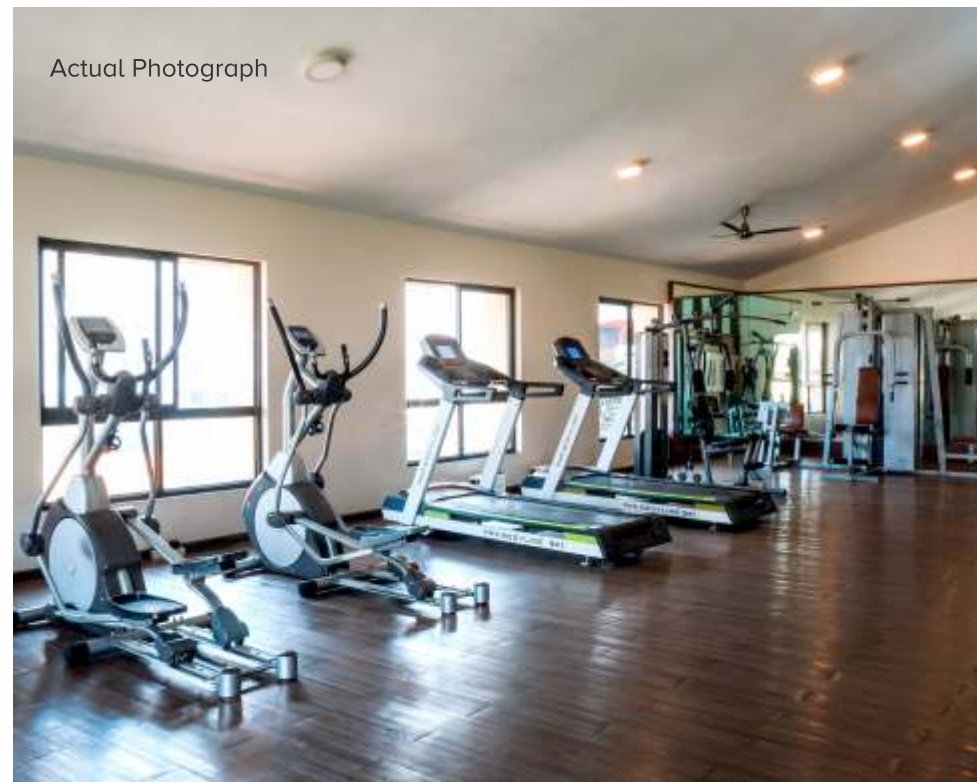
A wholesome living awaits you in a verdant spread of greens at **Kumar Pebble Park**. Rejoice in this perfect blend of urban convenience and serenity. Located at Handewadi Road, Hadapsar comfortably close to the corporate hub and the bustling city life, yet cocooned in peace, it spells a delightfully fulfilling life. **2 BHK** apartments coupled with myriad recreational areas for all ages. Kumar Pebble Park has won '**Residential Property of the Year 2017**' award at the Realty Plus Excellence Awards.



Actual Photograph



Actual Photograph



Actual Photograph

RECREATIONAL AREAS

INDOOR



Multi Purpose Hall with Party Area



Pool Table



Gymnasium



Carrom Board



Table Tennis



Soft Play Room



Steam Room



His/Her Washrooms



Actual Photograph

Actual Photograph



Promotional purpose only

RECREATIONAL AREAS

OUTDOOR



Swimming Pool



Tennis Court



Children's Park



Landscaped Garden



Cricket Pitch with Net



Party Lawn



Badminton Court



Basketball Court



Futsal Court



Actual Photograph



Actual Photograph



Actual Photograph

COMMON AREA FACILITIES

- Over 350 Happy families already residing at Kumar Pebble Park
- The project offers 1 acre of ready recreation area; Pebble Park 365 – a convenience store & cafe and a Pebble Park Bus stop, located only 100 mtrs away
- The project has convenient access through well built concrete roads, all the internal and external roads are well lit. All buildings are surrounded with varied flowering plants & trees
- Project lies within PMC limits and has overhead & underground water tanks for plenty of water storage
- An elevated podium for every day walks or hang out sessions is unique to the project
- Security cabin at main entrance gate, boom barrier, Surveillance Room, CCTVs across entire project and intercom facility
- A pick-up and drop off point near the main entrance gate for School buses, etc ensuring safety of your kids
- Two automatic passenger elevators with complete DG Power Back up in every building | Complete DG backup for common areas
- Fire safety Refuge area on 8th and 12th floor | Fire-fighting systems for every building
- Water Treatment plant | Sewage Treatment Plant



Actual Photograph



Actual Photograph



Actual Photograph

FLAT SPECIFICATIONS

DOORS & WINDOWS

Powder coated aluminium sliding windows/doors in all rooms | Mosquito net and MS grills to bedroom windows | Main door with skin, brass fitting and panel or equivalent | All internal laminated/prefinished doors

ELECTRICALS

Concealed electrical copper wiring with circuit breakers | Earth leakage circuit breakers in main electrical panel | Adequate electrical points in each room | Premium quality switches in all rooms | Provision for inverter | Provision for TV & AC in master bedroom | Provision for Intercom Facility

WALLS & CEILING

Superior internal OBD wall finish | Gypsum/POP walls and ceiling

BATHROOMS

A combination of tiles for bathrooms till lintel level | White sanitary ware | Hot/cold external shower mixer | Concealed plumbing with premium quality pipes

FLOORING

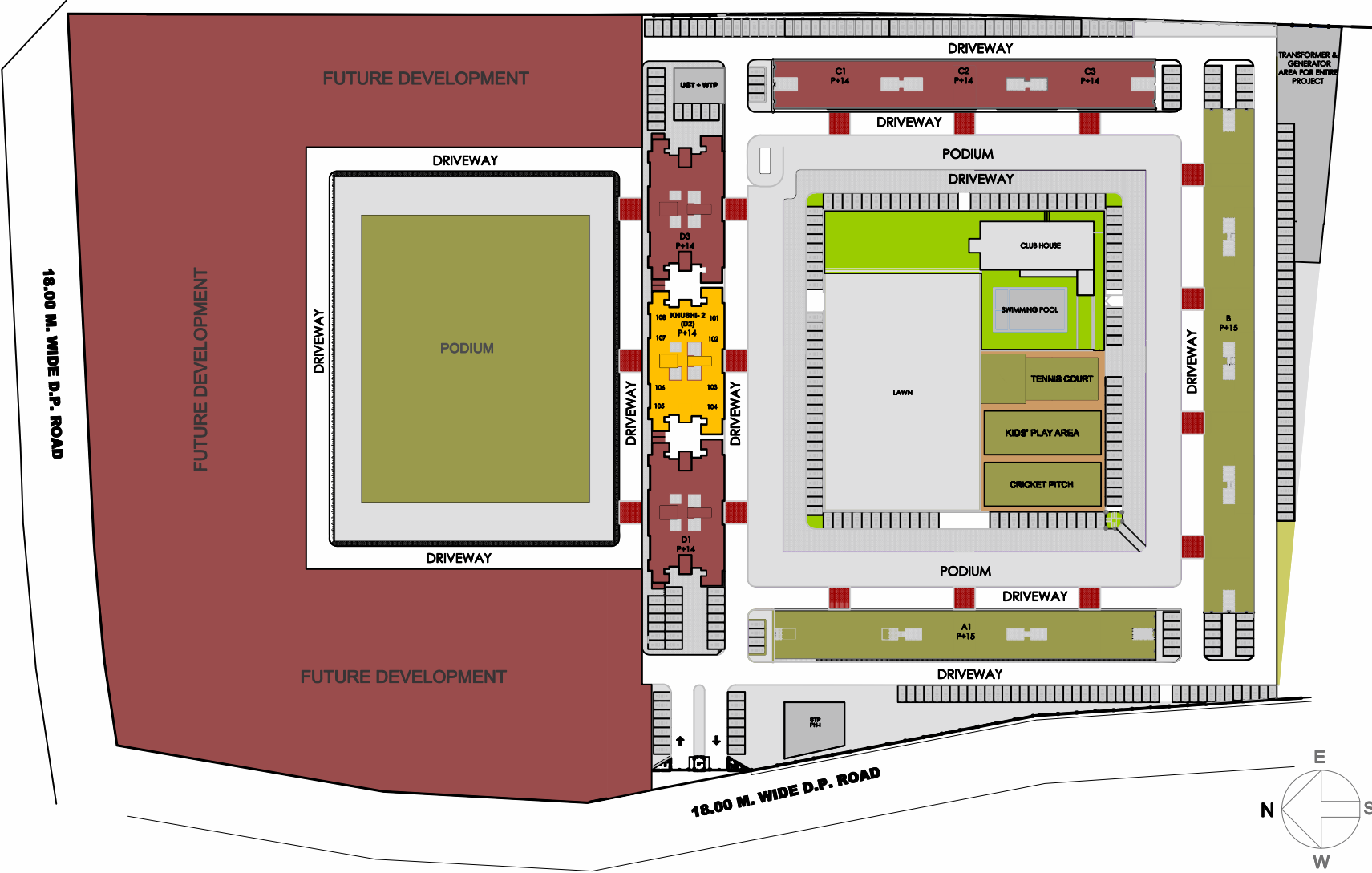
Vitrified tile flooring in all rooms

KITCHEN

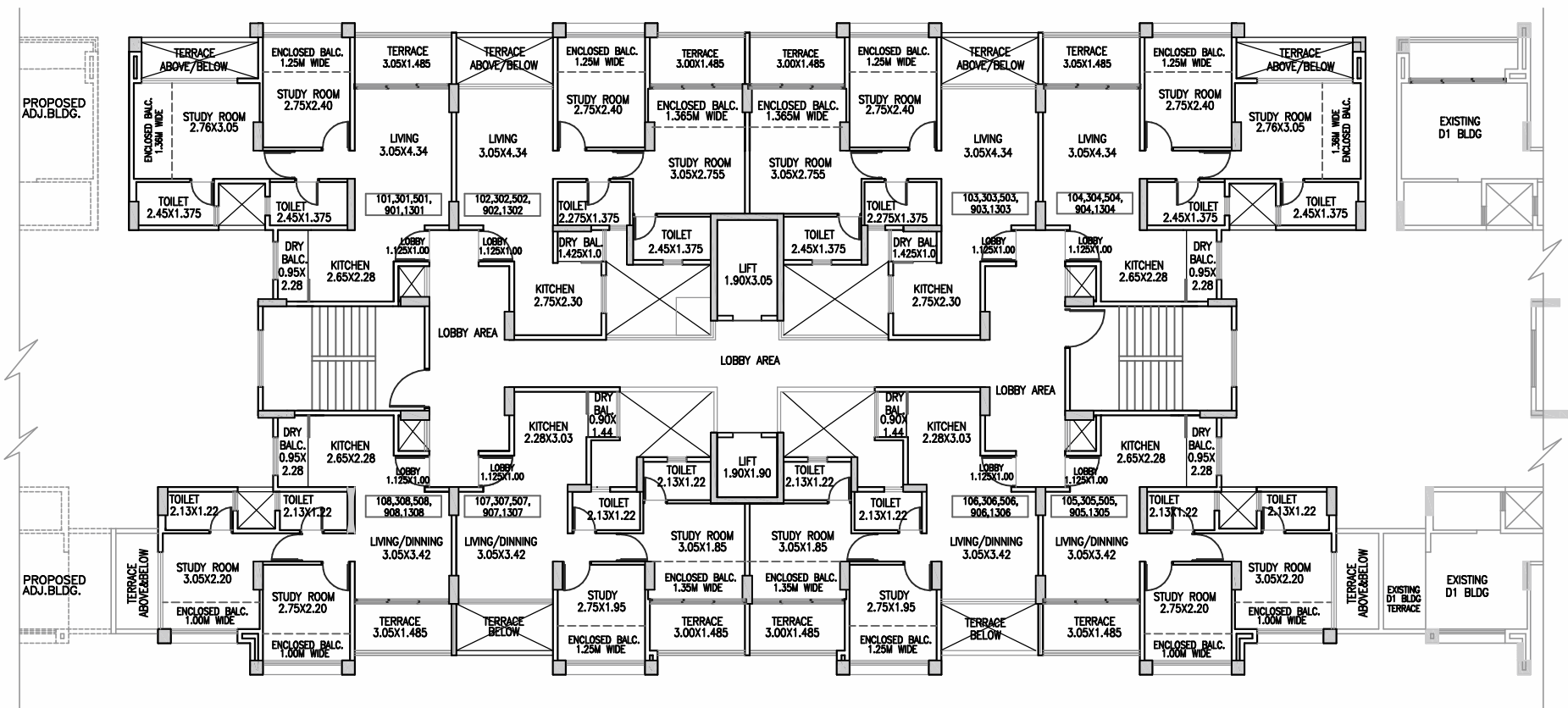
Kitchen platform with granite top with stainless steel sink with tap | Kitchen Dado wall tiles of 1'6" width from the granite top | Plumbing point provisions for water purifier and washing machine | Provision for exhaust fan & refrigerator



PROJECT PLAN



ODD FLOOR PLAN



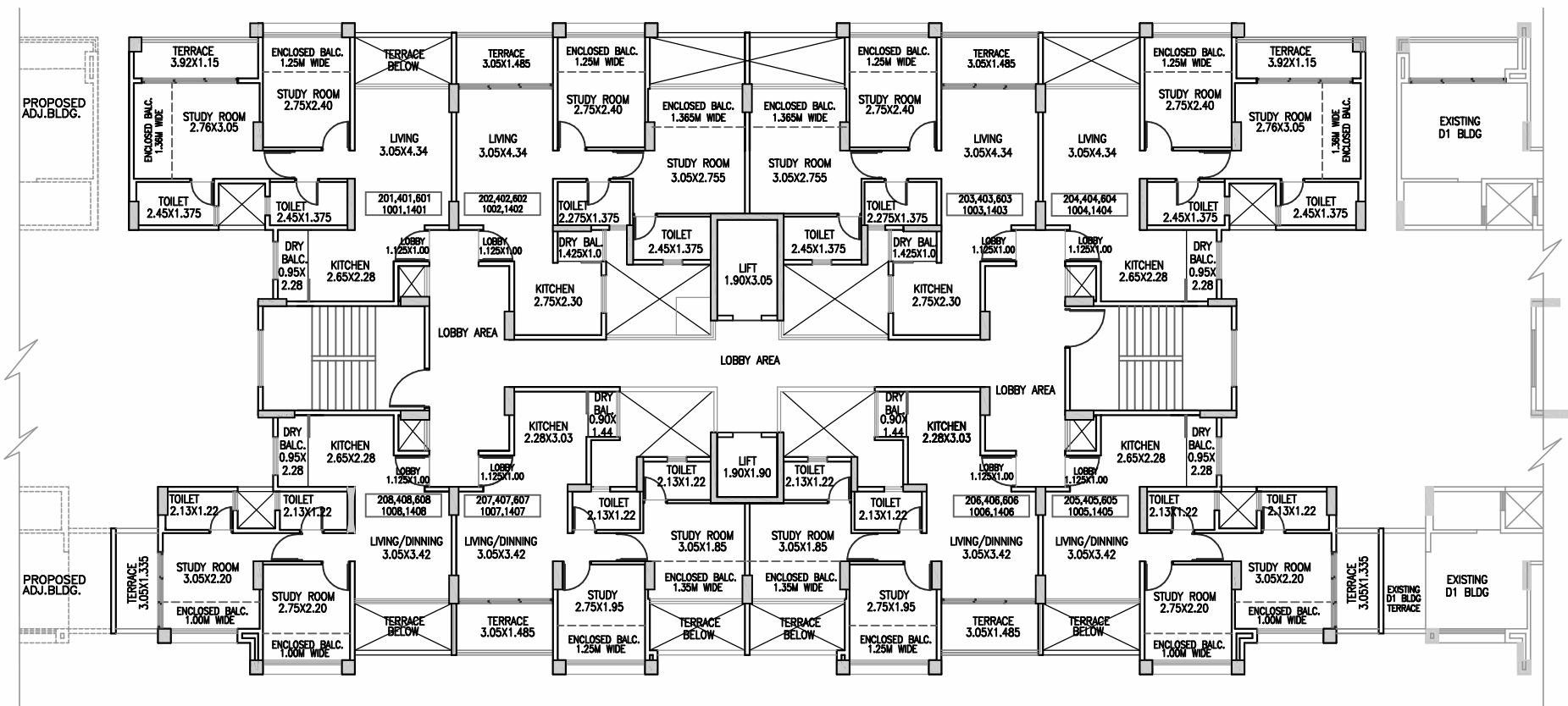
NOTE: ALL DIM. IN METERS

Khushi 2 (D2)
TYPICAL 1ST,3RD,5TH,9TH & 13TH FLOOR PLAN

FLAT NO.	FLAT TYPE	FLAT AREA	CARPET AREA IN SQ.M.		
			ENCLOSED BALCONY	DRY BALCONY	TERRACE AREA
101,104,301,304,501,504,901,904,1301,1304	2 BHK	46.95	6.56	2.10	4.41
102,103,302,303,502,503,902,903,1302,1303	2 BHK	47.95	7.07	1.37	4.33
105,108,305,308,505,508,905,908,1305,1308	2 BHK	40.24	4.79	2.10	4.41
106,107,306,307,506,507,906,907,1306,1307	2 BHK	39.37	7.03	1.25	4.33



EVEN FLOOR PLAN



NOTE: ALL DIM. IN METERS

Khushi 2 (D2)
TYPICAL 2ND,4TH,6TH,10TH & 14TH FLOOR PLAN

FLAT NO.	FLAT TYPE	FLAT AREA	CARPET AREA IN SQ.M.		
			ENCLOSED BALCONY	DRY BALCONY	TERRACE AREA
201,204,401,404,601,604,1001,1004,1401,1404	2 BHK	46.91	6.56	2.10	4.29
202,203,402,403,602,603,1002,1003,1402,1403	2 BHK	48.49	6.58	1.37	4.41
205,208,405,408,605,608,1005,1008,1405,1408	2 BHK	40.10	4.80	2.10	3.96
206,207,406,407,606,607,1006,1007,1406,1407	2 BHK	39.90	6.58	1.25	4.41

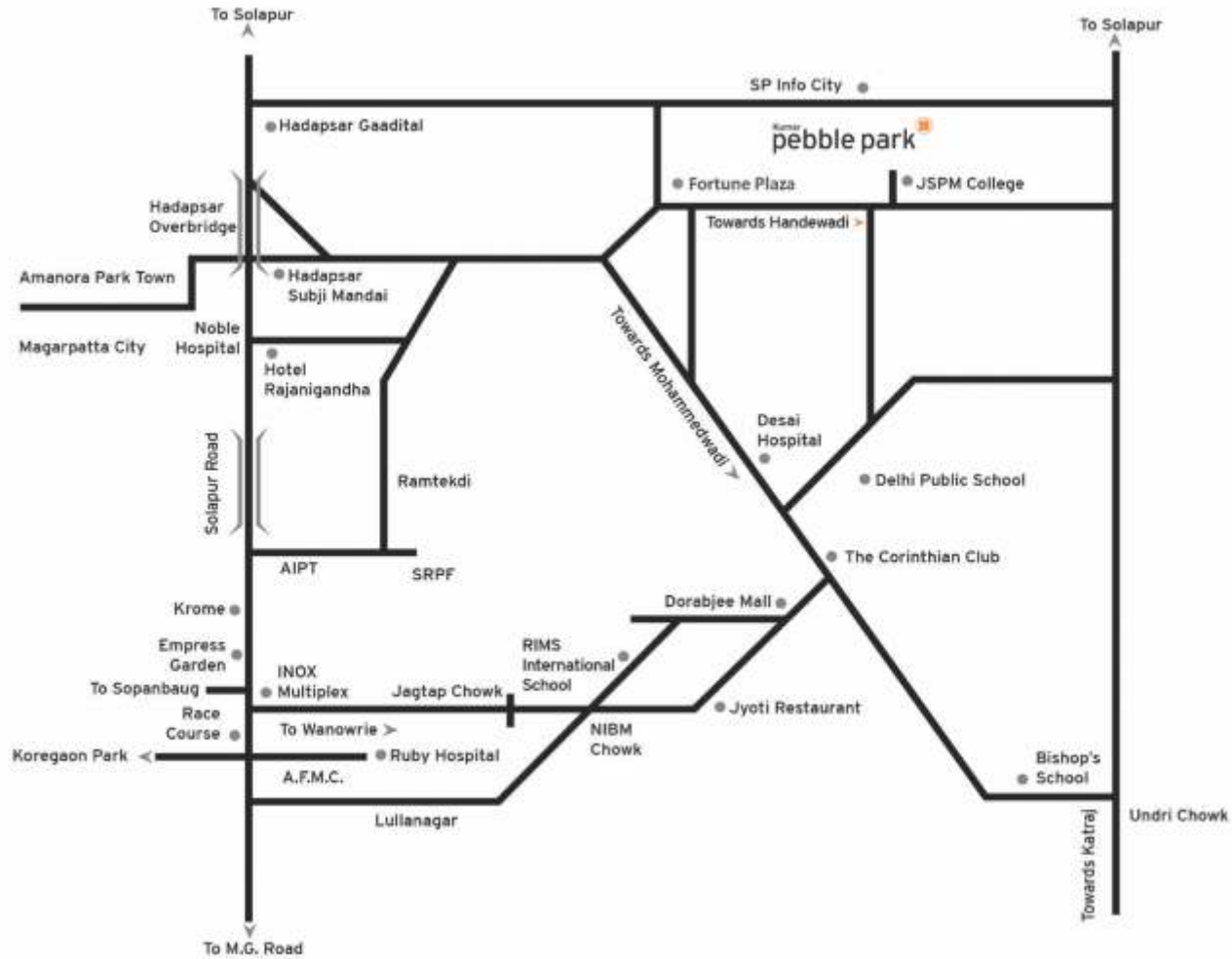


KEY LOCATIONS



*Approximate distances as found on Google maps.

LOCATION MAP



Kumar
pebble park



Tower D2 : P52100020421
maharera.mahaonline.gov.in

**DEVELOPER -
KUMAR COMPANY**

SITE ADDRESS : S.No 55, Handewadi Road, Satav Nagar, Hadapsar, Haveli, Pune 411 028
Call +91 95 95 61 00 00 | sales@kumarproperties.com | www.kumarproperties.com
CORPORATE OFFICE : 3rd floor, kumar Properties, East Street, Camp, Pune 411 028

Disclaimer : All images shown are for promotional purpose only. Terms & conditions apply.

