

Kumar
palaash

VADGAONSHERI | 2 BHK HOMES





Image for promotional purpose only



Kumar Properties

The tallest of reputations are built on the deepest of foundations

Have you ever asked yourself what truly separates a house from a home? True, they are both built of the same materials and they may have the same facilities but there is one thing in a home that a house will never have; a soul. In a home you will find warmth, love and solidarity. At Kumar Properties, we do not build houses; we build homes. For over half a century, Kumar Properties has carved a niche for itself in the cluttered marketplace with an unwavering adherence to two simple values – quality and trust. Our wholesome homes have given our patrons many-a-reason to believe in us and spread the word. So when you move into a Kumar Properties project, you're not just moving into a new house, you're walking into a home that will love you back with all its heart. It will keep you safe and warm so that you can nurture your dream.

HABITATS

Builders build houses; We build Habitats.

'R' Habitats talks about one big family that shares, cares and celebrates together. It is about who we are and what we love to do. It is a perfect harmony of the essential, social and recreational aspects of life, 'R' Habitats is an experience like no other because it isn't just about a space to live in, it's about the people you're living with! A philosophy that is meant to evolve as years go by so that you always feel being taken care of. Life at 'R' Habitats is always exciting and debuts an electrifying mix of events, initiatives and benefits. 'R' Habitats is a collaborative affair and with your participation we can surely make it even better.

AWARDS & RECOGNITIONS

Good work is noticed. Great work is rewarded.

Over the five decades of our existence, we have won many laurels and awards for our adherence to quality, passion and commitment. Yes, it feels great. But our true reward is the trust that over 30,000 customers have placed in us and the projects we have delivered to make them happy. These awards only motivate us to work harder because we know that it is rather easy to get to the top; but what takes a true commitment and an unrelenting adherence to passion is, staying there!



Artist Rendering

PROJECT OVERVIEW

MODERN & ERGONOMIC 2 BHK HOMES

Kumar Palaash, meaning a 'flowering tree' is an ideal place for your growing family. Offering Modern & Ergonomic 2 BHK homes designed for those seeking peace and serenity amidst the bustling city life. Vadgaonsheri has a growing location value given its connectivity to the areas such as Kharadi, Viman Nagar, Koregaon Park. It's proximity to the airport, renowned Shopping Malls such as Phoenix Market City and several IT & Industrial Parks and Educational institutions makes it one of the fastest developing and sought-after localities in Pune. Kumar Palaash offers range of amenities catering to all age groups, thus giving a holistic living experience and value for your money.



All images for promotional purpose only



RECREATIONAL AREAS



Multi Court



Children's Play Area



Landscaped Garden



Cricket Wicket



Racket Ball



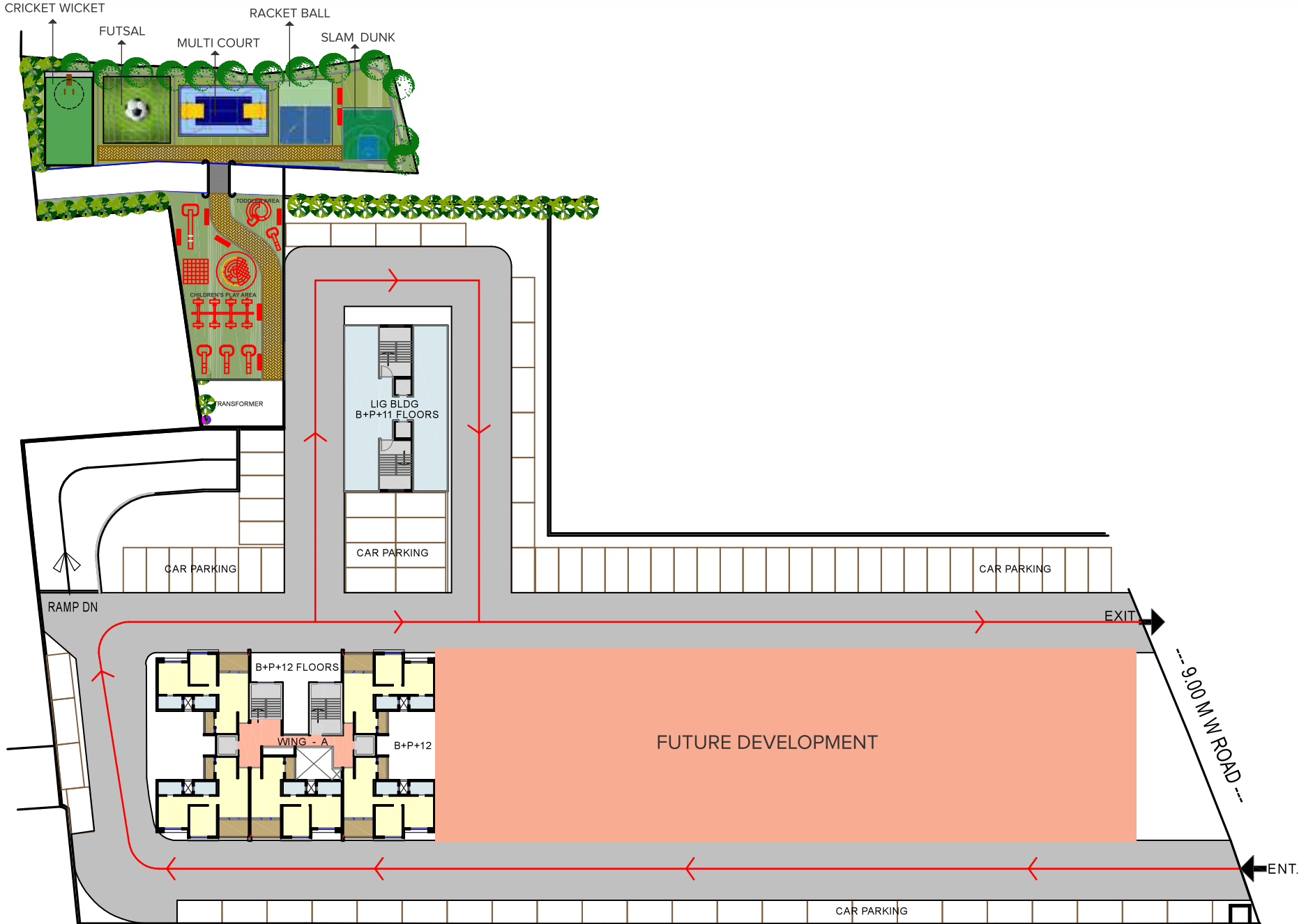
Slam Dunk



Futsal Court

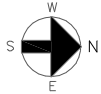


PROJECT PLAN



LAYOUT PLAN

PROPOSED RESIDENTIAL PROJECT AT S.NO.55/1/1, VADGAONSHERI, PUNE



COMMON AREA FACILITIES

- The project has convenient access through well built concrete roads, all the internal and external roads are well lit. Building is surrounded with varied flowering plants & trees
- Project lies within PMC limits and has overhead & underground water tanks for plenty of water storage
- Security cabin at main entrance gate, Surveillance Room, CCTVs across entire project and intercom facility
- Two automatic passenger elevators with Power Back up
- DG backup for common areas
- Fire safety Refuge area on 8th floor
- Fire-fighting system in the building
- Sewage Treatment Plant



FLAT SPECIFICATIONS

DOORS & WINDOWS

Powder coated aluminium sliding windows/doors in all rooms | Mosquito net and MS grills to bedroom windows | Main door with skin, brass fitting and panel or equivalent | All internal laminated/ prefinished doors

ELECTRICALS

Concealed electrical copper wiring with circuit breakers | Earth leakage circuit breakers in main distribution board | Adequate electrical points in each room | Premium quality switches in all rooms | Provision for inverter | Provision for TV & AC in all bedrooms | Provision for Intercom Facility

WALLS & CEILING

Superior internal OBD wall finish | Gypsum / POP walls and ceiling

BATHROOMS

A combination of tiles for bathrooms till lintel level | White sanitary ware | Concealed plumbing with premium quality pipes

FLOORING

Vitrified tile flooring in all rooms | Anti-skid flooring for terraces

KITCHEN

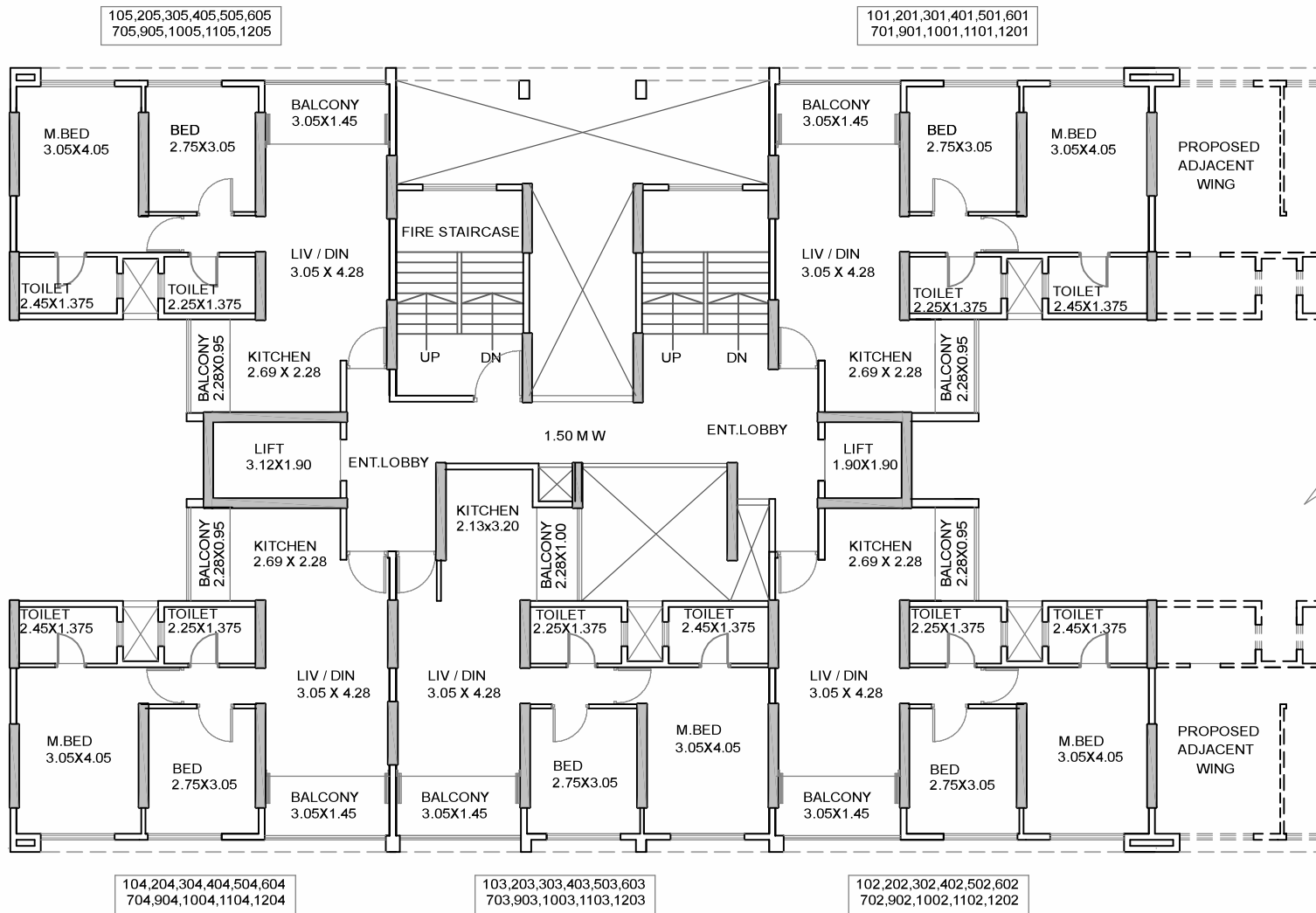
Kitchen platform with granite top with stainless steel sink with tap | Kitchen Dado wall tiles upto 1'6" height | Plumbing point provisions for water purifier and washing machine | Provision for exhaust fan & refrigerator



All images for promotional purpose only



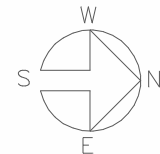
TOWER 'A' FLOOR PLAN



Note - All Dimensions in Meters

TOWER 'A'
TYPICAL FLOOR PLAN
(1ST,2ND,3RD,4TH,5TH,6TH,7TH,9TH,10TH,11TH,12TH)

FLAT NO.	FLAT TYPE	CARPET AREA IN SQ.M.	
		FLAT AREA	BALCONY AREA
101,201,301,401,501,601,701,901,1001,1101,1201	2 BHK	51.47	6.40
102,202,302,402,502,602,702,902,1002,1102,1202	2 BHK	52.28	6.51
103,203,303,403,503,603,703,903,1003,1103,1203	2 BHK	52.28	6.51
104,204,304,404,504,604,704,904,1004,1104,1204	2 BHK	51.47	6.40
105,205,305,405,505,605,705,905,1005,1105,1205	2 BHK	51.47	6.40



KEY LOCATIONS

Distances from Nearby Areas

Cinema

Cinepolis	3.1 km
PVR	4.3 km
Inox	5.5 km

Travel

Pune Airport	6.7 km
Pune Station	8.8 km

Areas

Mundhwa	1.6 km
Kharadi	2.2 km
Magarpatta	3.9 km
Hadapsar	4.9 km
Viman nagar	5.3 km

Clubs

Turf Club	7.8 km
The Poona Club	8.5 km

Shopping

Seasons Mall	3 km
Nitesh Hub	4.3 km
Amanora Mall	5.6 km

Hospitals

Old Ankur hospital	250 m
Columbia Asia Hospital	900 m
Motherhood Womens & Child hospital	1.5 km
Rakshak hospital	2.2 km

Groceries

Reliance Mart	2.4 km
Star Bazaar	3.1 km
Dmart	4.9 km

Education

Mother Theresa School	700 m
Little Millenium	1.2 km
Stella Maris High School	1.4 km
St. Arnold Central School	3.1 km

Food

Cocoparra	900 m
Hotel Shivshakti Pure Veg	1.2 km
Carnival Restaurant	3.4 km

*Approximate distances as found on Google maps.

LOCATION MAP



Kumar
palaash



Tower A : P52100016678
maharera.mahaonline.gov.in

DEVELOPER -
KUMAR & POTNIS ASSOCIATES

SITE ADDRESS : S. No. 55/1/1, Vadgaonsheri, Pune 411014

Call +91 95 95 61 00 00 | sales@kumarproperties.com | www.kumarproperties.com

CORPORATE ADDRESS : 3rd floor, Kumar Properties, East Street, Camp, Pune 411 001

Disclaimer : All images shown are for promotional purpose only. Terms & conditions apply.

